

RC-Z2A/21A

Camera Control Panel

Specifications

Hitachi Denshi, Limited

Dec. 6 1999

## 1. General

Hitachi Camera Control Panel RC-Z2A/21A is designed as a remote control device for Hitachi Z-3000 series and Z-2000 series color camera \*1. For remote control operation, this panel is connected to the color camera unit directly or the camera base station RU-Z2/Z3.

\*1: Z-3000 series... Z-3000W,Z-3000,S-3000W,S-3000,V-21W,V-21  
Z-2000 series... Z-2010A,Z-ONE.DA,Z-1800

## 2. Features

### (1) Bidirection communication system employed

The bidirectional serial communication control system is adopted to realize significant enhancements in the signaling functionality, e.g. the status indicator is made using the answer-back signal from the camera.

### (2) Scene file function incorporated

A file of videographing conditions suitable for a particular scene can be stored in advance. When a picture in that scene is taken, the stored scene file can be retrieved immediately.

### (3) Ease of operation

The easy-to-use large knob is equipped for iris control (RC-Z2A), the illuminated key switches are mounted, and other user-friendly arrangements are provided.

(On the RC-Z21A, the joystick is equipped for iris control and master black control.)

### (4) Memory backup

The serial data is retained in the internal EEPROM (backup battery not required).

Therefore, when power is turned on, the serial data stored at the last time of power-off can be reproduced.

### (5) Functional improvements

As functional improvements over the conventional; SHUTTER, CONTRAST, ULTRA GAIN ON/OFF, TALLY/CALL, EXTENDER, etc.

## 3. Specifications

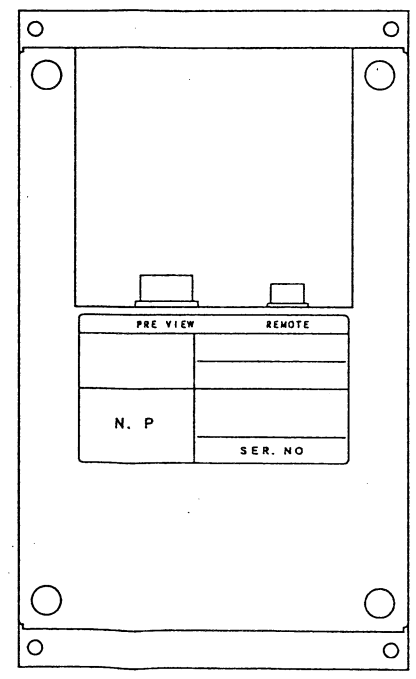
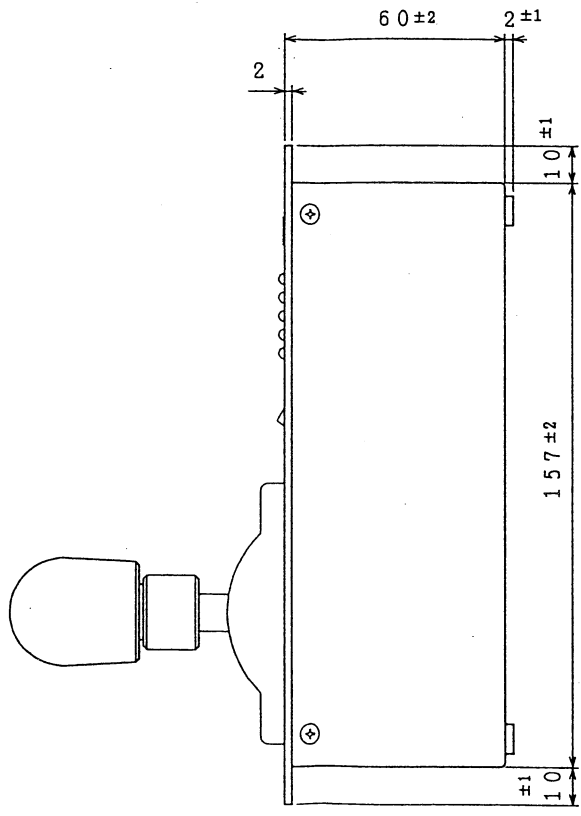
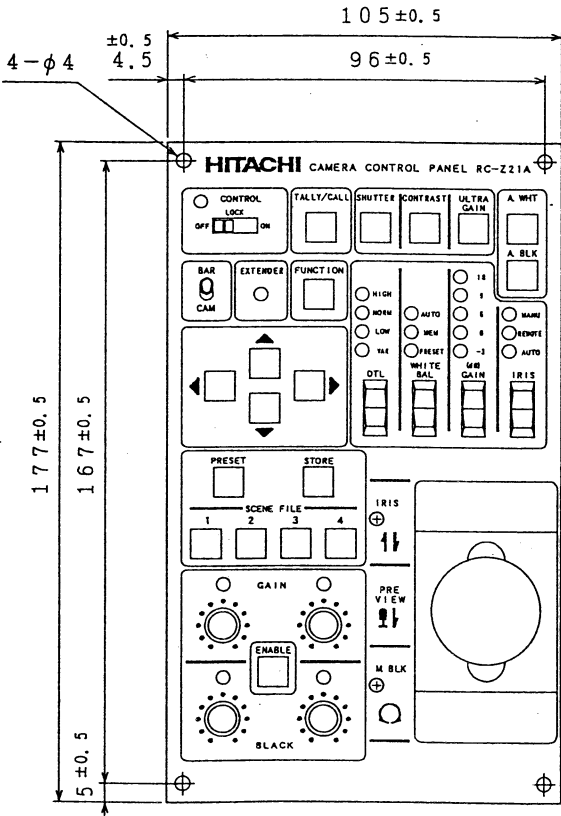
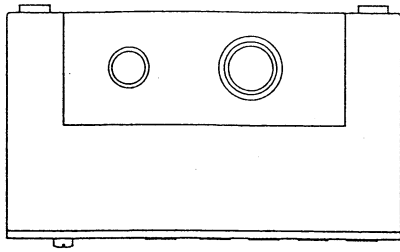
- |                           |   |
|---------------------------|---|
| (1) Compatible camera:    | Z-3000 series and Z-2000 series                   |
| (2) Serial data output:   | 1.5Vp-p   |
| (3) Maximum cable length: | 200m (In case that the cable HC-5L3 is used)      |
| (4) Power supply:         | 9 V DC  |
| (5) Ambient temperature:  | +5 to +40°C                                       |
| (6) Power consumption:    | Approx. 0.6W                                      |
| (7) External dimension:   | 105 x 177 x 60 mm (Excluding protrusions)         |
| (8) Mass:                 | RC-Z2A: Approx. 0.9 kg<br>RC-Z21A: Approx. 1.1 kg |

(9) Control items:

- TALLY/CALL
- ULTRA GAIN ON/OFF and indication
- CONTRAST ON/OFF and indication
- EXTENDER indication
- FUNCTION sel., UP/DOWN control, LEFT/RIGHT control
- SHUTTER sel., and 1 PRESET FILE
- DTL sel.
- 3db step GAIN(-3~+24dB)
- CONTROL(OFF/LOCK/ON) sel.
- R GAIN
- B GAIN
- BAR/CAM sel.
- M BLK level
- R BLK level
- B BLK level
- WHITE BALANCE mode sel.
- IRIS CONTROL
- IRIS MODE sel.
- AUTO WHITE
- AUTO BLACK

4. Standard Configuration

	RC-Z2A	RC-Z21A
(1) Camera control	1	1
(2) Remote control (10m)	1	1
(3) Cable connector(RM12BPG-3S)		1
(4) Instruction manual	1	1



UNIT : mm

